

The *IDEA*logue

SCHOLARLY ACTIVITY NEWSLETTER • SUMMER 2014

Langara.

THE COLLEGE OF HIGHER LEARNING.



About *IDEA*logue

The *IDEA*logue shares and promotes news about scholarly projects and applied research happening in our Langara community. We aim to shine a spotlight on faculty, staff, and administrators here at the College who are reaching out and applying their knowledge and learning to the world beyond the classroom – whether it be through community partnerships, educational leave, or experimental research.

We also aim to connect Langara scholars with information about the potential funding available to them, so if you're working on a project, please let us know by getting in touch at scholarlyactivity@langara.bc.ca.

Be Inspired.

THIRD ANNUAL LANGARA SCHOLARSHIP SHOWCASE

We are excited to announce that this year's Showcase will be expanding to two days. Also, the dates have moved to later in the term to facilitate more student-based projects. Please join us on Nov. 19th and 20th from 10:30 to 1:30 in the breezeway between A and B buildings to celebrate faculty and student success in scholarly activity. We are aiming to have presentations grouped by department, so consider getting your department together to highlight your achievements. A template for poster presentation will be available for you to use or as a starting point for a student assignment. A keynote speaker will be part of the program as well. Stay tuned for more details!

Inspire Others.

Are you involved in exciting applied research or a unique scholarly project? Do you have students who are conducting interesting research as part of their studies? Or are you looking for a great opportunity to give your research poster a second life? Be part of the Langara Scholarship Showcase!

We're looking for faculty, staff, and students who are involved in scholarly activities to share their work, show off their accomplishments, trade ideas with colleagues, and generate interest in applied research. Whether your work is old or new, we want to experience it. If you'd like more information or you're interested in participating, contact Marg Heldman at 604.323.5499 or Tomo Tanaka at 604.323.5313. We're looking forward to hearing from you!

ED LEAVE 15 ANNOUNCEMENT

Applications for Education Leave for the 2015/2016 fiscal year (April 1, 2015 – March 31, 2016) must be submitted to the Office of the Academic Deans (B241) by Friday, November 14th.

GET THE RECOGNITION AND SUPPORT YOU DESERVE.

Have a great idea? Working on a community project? Presenting a paper at a conference? Know someone else from the Langara community conducting research? We want to know. Get the recognition and support you deserve. Contact us at 604.323.5249 or scholarlyactivity@langara.bc.ca.

September Launch for Course-Based Research Ethics Review Process

By John Russell, Philosophy Instructor and Chair of the Langara Research Ethics Board

Beginning in September 2014, any instructor who is teaching a course that requires or allows students to engage in research involving humans must have approval from the Langara Research Ethics Board prior to teaching the course. The deadline for applications for the fall semester is August 15, 2014. Applications should be submitted by this date to the Langara REB chair, John Russell (jrussell@langara.bc.ca, 604-323-5453). He or a delegated member of the REB will review applications before fall classes commence. A link to the application and related information is at the bottom of this article.

Does My Course Require Ethics Review?

Course-based research involving humans must be conducted solely for pedagogical purposes in order to be eligible for review by the REB chair or another REB member. Such research will involve collecting data from living human participants and involve students in activities that, at least notionally, reflect undertakings intended to extend knowledge through a

disciplined inquiry or systematic investigation. Course-based research involving humans that is not conducted solely for pedagogical purposes will normally be reviewed by the full Langara REB and follow a separate review process. For example, if students are collecting data for the instructor's own research or for another researcher's study, an application for ethical review would have to be submitted to the full Langara REB (see link below).

Will I Have to Apply Each Time I Teach My Course?

No. Once the REB chair or delegate is satisfied that the course proposal meets appropriate ethical standards, s/he shall designate the course as a "Research Ethics Approved Course." The designation shall remain in effect as long as there are no changes to the nature of the research methods that are being utilized and the mechanisms for ethics training and oversight of student research remain the same. If any of these elements changes, an amendment to the Langara REB must be

submitted in writing and approved before the changes are implemented.

What If I Have Questions?

If you have questions about completing the application, or if questions about the ethical content of student research proposals arise while the course is being taught, please contact John Russell. While the approval of an instructor's course syllabus is for an indefinite period, one of the purposes of the application process is to establish a relationship with the REB so it can act as a resource for instructors who have questions about the ethical content of student research involving humans.

Where Are the Applications and Related Resources?

The link to forms and other resources for REB review of course-based research and other research involving humans can be found at www.langara.bc.ca/about-langara/research-ethics-board/resources/forms.html

A Collaborative Applied-Research Project: Student Engagement with Seniors' Communities

By Janet Douglas (Social Service Worker Instructor) and John Falcus (School of Management Instructor)

Janet Douglas and John Falcus, both members of the Scholarly Activity Steering Committee, worked together over the past term to create an innovative new research opportunity for the Langara School of Management's Marketing Research 2100 students. In keeping with the College's focus on community-based projects, John and Janet approached the South Granville Senior's Centre to discuss their interest in working together. The Centre is a nonprofit, community-based agency that provides low-cost and free educational, recreational, social, and health-related programs and services for seniors in their area. Clemenica Gomez, the director of the Centre, was very excited about the opportunity and keen to work with Langara students to learn more about perceptions of the Centre and how to increase participation rates.

Student interest in the project exceeded John's expectations – in fact, students had to compete



for a spot on the team. Overall, 16 students were able to participate. Four focus groups were conducted by the students and supervised by both faculty members. Team debriefs after the sessions revealed an unintended and unanticipated outcome for the students. Many were deeply moved by the seniors' experiences and felt a strong commitment to help find solutions that would benefit the seniors' lives. One student writes:

"I think more courses should require our assignments and projects to be applied to businesses and nonprofit organizations in our community. It gives us a real sense of connection to our work... I learned a lot about what a senior center provides to the people in our community... Their passion for the center is infectious and it was only a matter of time before I felt emotionally connected to each of them. Now, I feel personally responsible for helping this senior center improve... I don't want to let them down."

Students went on to develop and administer an in-person survey, which strengthened their relationships with the seniors and contributed to the meaningfulness of their project. The findings of the study will be presented to the South Granville Senior's Centre by the students this summer. Given the success of the project, more work with the Centre is anticipated for future students.

Langara Awarded \$25,000 NSERC Grant for Biochar Research

By Chris Smith, Communications Officer

Langara College has been awarded its first ever NSERC (National Science and Engineering Research Council) grant under the College and Community Innovation Program. The Applied Research and Development grant will provide valuable funding to the biochar project developed and led by Chemistry instructor Kelly Sveinson in partnership with McCue Engineering Contractors.

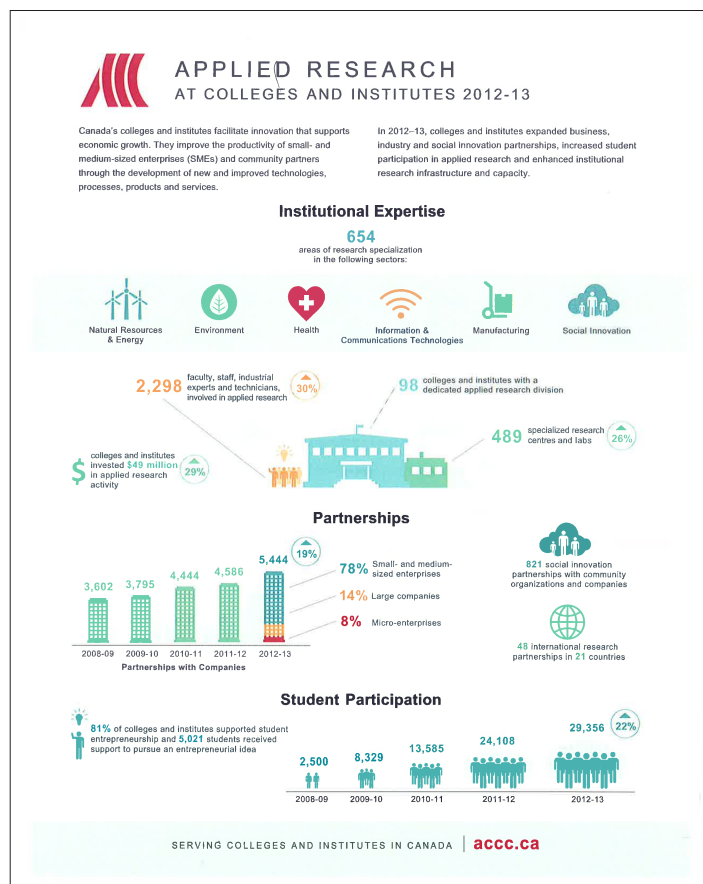
"With this applied research project, we aim to protect the environment, give students deep learning opportunities, and potentially create market opportunities for our partner," says Sveinson.

Sveinson launched the biochar project at Langara College in 2011 to explore the science of biochar production and use. The project uses Langara's experimental biochar reactor to convert a variety of biomass wastes into biochar, a substance similar to charcoal. Biochar has been shown to improve soil quality and can be used as a renewable solid fuel.

The goal of this new research is to explore the potential of biochar – which has the ability to adsorb metal ions – as a filter medium in wastewater-cleaning technologies. Biochar made from different sources, and chemically modified biochar, will be tested in an effort to find the optimum metal adsorption characteristics. Sveinson and his team will work with their colleagues at McCue Engineering to ensure the work has direct relevance to industrial applications.

"We are excited to receive the support from NSERC to continue important work in biochar research and education," says Marg Heldman, Dean of the Faculty of Science. "This research work will be foundational in the development of information on biochar capabilities, while providing important opportunities for students to work with researchers and industry partners." Much of the grant will go towards funding student researchers, giving them valuable technical training in biochar production, laboratory experiments, and data analysis.

The College and Community Innovation Program is managed by the Natural Sciences and Engineering Research Council of Canada (NSERC), in collaboration with the Canadian Institutes of Health Research (CIHR) and the Social Sciences and Humanities Research Council of Canada (SSHRC). The Applied Research and Development (ARD) grants are intended to provide companies that operate from a Canadian base with access to the knowledge, expertise, and capabilities available at Canadian colleges and to train students in essential technical skills required by companies.



YOUR SCHOLARLY ACTIVITY STEERING COMMITTEE

Leelah Dawson	Dean, Faculty of Social Science & Management
Janet Douglas	Faculty, Social Service Worker
John Falcus	Faculty, Langara School of Management
Vivian Feng	Librarian, Coordinator, Reference & Instructional Services
Margaret Heldman	Dean, Faculty of Science
Ian Humphreys	Vice-President, Strategic Planning and Business Development
Lynn Kitchen	Manager, Custom Training
Brad O'Hara	Vice-President, Academic & Provost
Indira Prahst	Faculty, Sociology
John Russell	Chair, Langara College Research Ethics Board
Kelly Sveinson	Division Chair, Humanities
Tomo Tanaka	Division Chair, Creative Arts
Heather Workman	Chair, Coop Education & Internship

Contact Us

Veronica Yeung
Administrative Assistant
Office of the Academic Deans
Phone: 604.323.5690
Email: vyeung@langara.bc.ca

For more information, visit the
Scholarly Activity site at [www.langara.bc.ca/
about/scholarly-activities.html](http://www.langara.bc.ca/about/scholarly-activities.html)



The Langara College Apiary

By Kenneth Naumann, Biology Instructor

Langara College established a small apiary in May of 2014, situated in a lovely spot next to the Langara Community Garden. To discourage people from walking directly up to the hives, they are surrounded by beds of plants that were donated, in part, by the college's Biology Club. The plants will eventually grow tall enough to form a hedge.

There were three main reasons to bring honey bees to campus: educational, environmental, and the sheer joy of watching honey bees at work. From an educational point of view, the workings of honey-bee societies illustrate important biological concepts such as the origin and organization of social behaviour, foraging strategies, and interactions with flowering plants and other organisms. Honey bees are also simply fascinating. Whenever I work at the colonies, someone is sure to come by and ask questions. In the future, groups of students will be taken on interior tours of the hives, and the bees may be used for small research projects.

Establishing an apiary has also been an opportunity for Langara College to help

counteract the serious decline of pollinating insects. Loss of natural habitat has caused a decline of native pollinator species, and the introduction of parasitic mites and the emergence of colony-collapse disorder have caused huge losses of honey-bee colonies. As part of their goal to help make Vancouver one of the world's most sustainable cities, the City Council encourages beekeeping in urban areas: "Urban beekeeping is an excellent way to improve pollination for plants in backyard, community, and public gardens, which leads to better vegetable production." The apiary could be considered an extension of the city's 'pollinator trail,' a project that provides a swath of forage and nest sites for bees that runs through central Vancouver.

If you have not yet visited the bees, stop by on a warm afternoon. Watch for different coloured pellets of pollen on the legs of returning foragers. Which plants do you think the different colours of pollen are coming from? How far do you think the foragers have gone? How did they find their way back?

